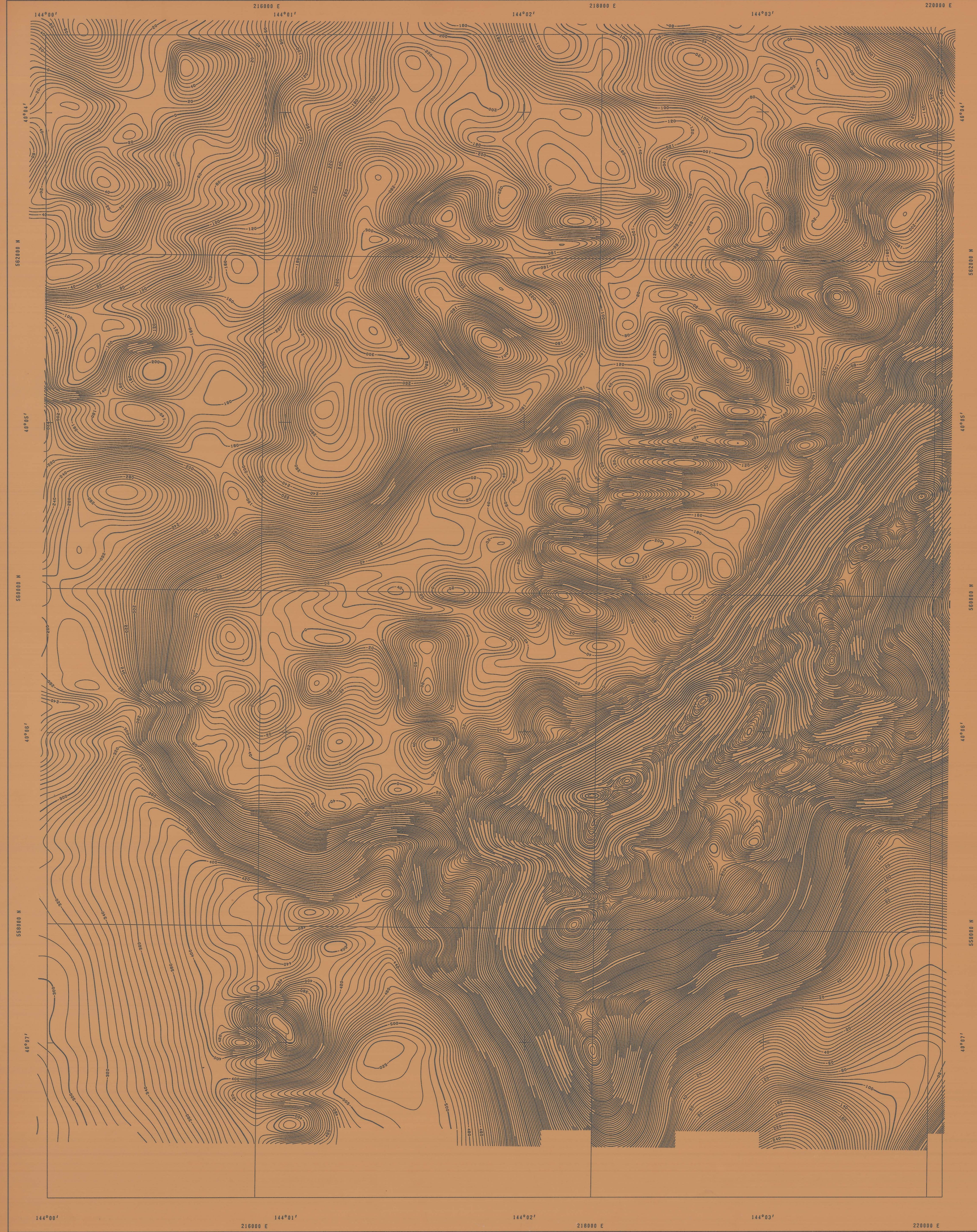


1841 ADV
000 00 00
- 1841 00 00

plan 15

50m

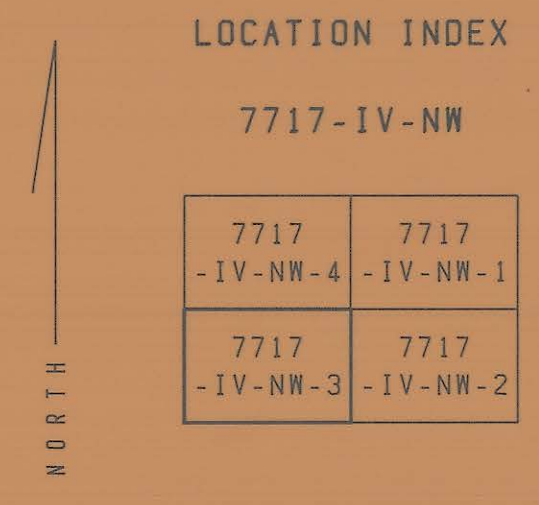


KING ISLAND SPECIAL GRASSY 7717-IV-NW-3

GEOPEKO



SCALE 1:10 000
200 0 200 400 600 800 1000 metres



INTEGRATED SURVEY GRID
ZONE 55/1
GRASSY

AIRBORNE GEOPHYSICAL SURVEY
Total Magnetic Intensity

FLIGHT DATA

Nominal traverse line separation: 150m
Nominal tie line separation: 1.5km
Nominal data spacing along flight lines: 70m
Nominal terrain clearance: 50m onshore - 15 m offshore
Navigation and recovery using Motorola Mini-Ranger MRS-3
Aircraft: Austirex Nomad N 22 B - Reg No: VH-FZP
Magnetometer Type: Sonotek 6039 in stinger

Survey Date: August 1980

MAP DATA

Contour Interval: 5m
IGRF subtracted prior to contouring

Survey flown and compiled by Austirex International Ltd
Project management by Geopeko geophysical group

DRAWING NO: 6 228 S/B